

Names \_\_\_\_\_

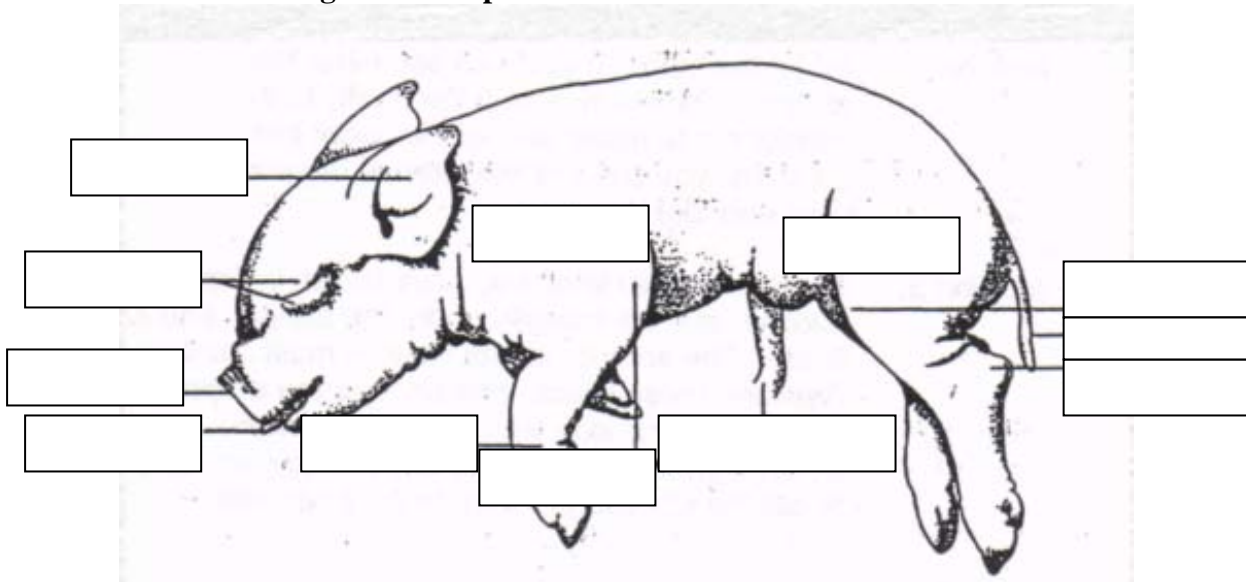
**Day 1 FETAL PIG DISSECTION HAND-IN**

1. How long (metric) is your fetal pig? \_\_\_\_\_

2. What is the age of your fetal pig? \_\_\_\_\_

3. What sense organs are located on the head & in the mouth? \_\_\_\_\_  
\_\_\_\_\_

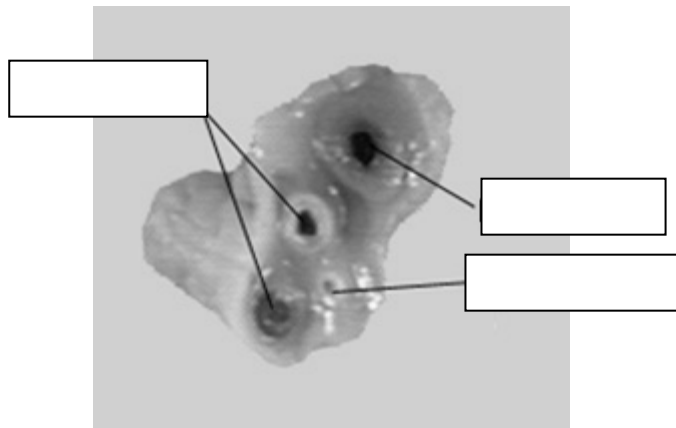
4. Label the external organs on the picture.



5. How many toes are present on each foot? \_\_\_\_\_

6. Are the hooves split or fused? \_\_\_\_\_

7. Label the sections of umbilical cord.



8. What is the sex of your fetal pig? \_\_\_\_\_

9. How can you tell the sex? \_\_\_\_\_

10. Label Figures 1 and 2.

Fig.1

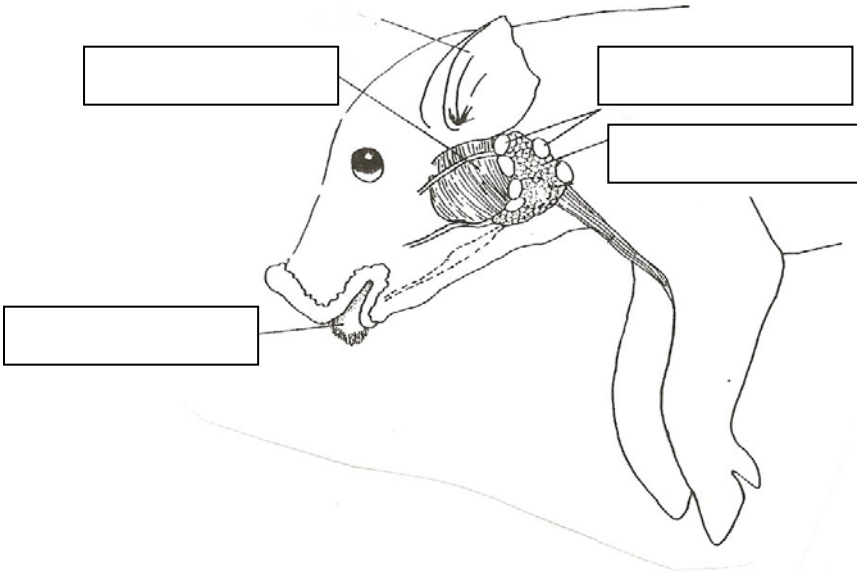
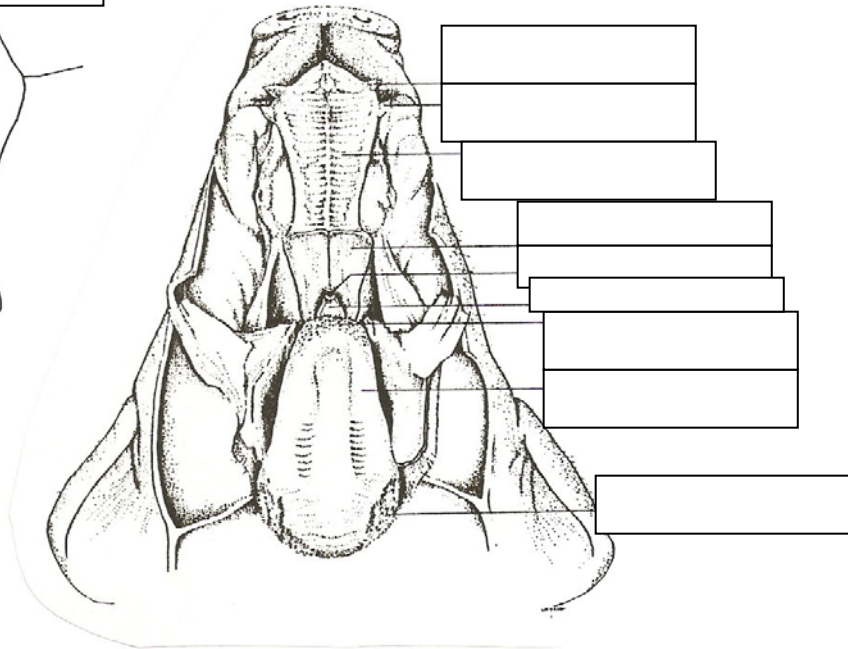


Fig.2



11. Are pigs omnivores, herbivores, or carnivores? How can you tell? \_\_\_\_\_

\_\_\_\_\_